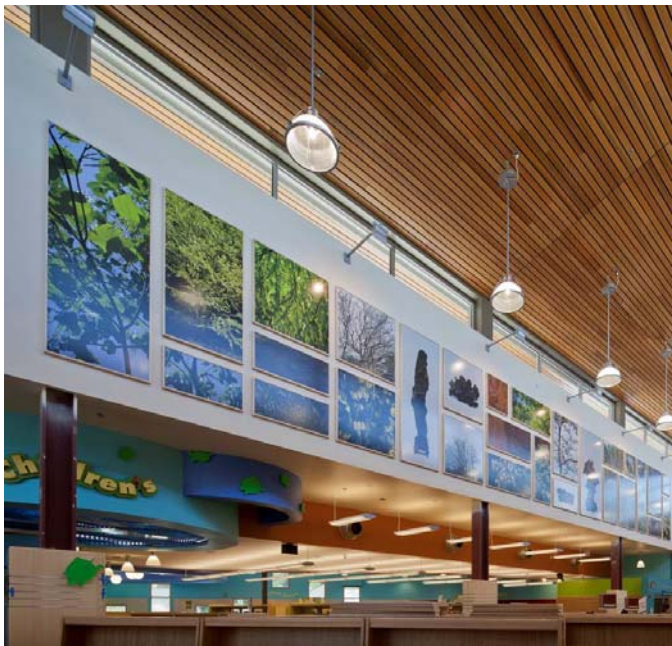


Nature/Knowledge, 2011

Artist: Catherine Wagner

Educational Park Branch Library, 1772 Educational Park Dr., San Jose, CA 95113 / Council District 4

ABOUT THE PROJECT



Installation view of *Nature Knowledge*

Source material for the photos includes trees, rocks and plants from Overfelt Gardens, as well as Chinese Scholars' Rocks from some of the preeminent collections in the United States.

Integrated into the installation at the west end of the building is the signage for the Library's "Tech Connect" area. This sign is comprised of two parts—the practical wayfinding text, and the surrounding cellular image forms. The cellular pattern was made using Voronoi diagrams for points that are algorithmically distributed through the panel and concentrated within the letter forms. So, abstractly the cells are defined by the letters and the surrounding images themselves. The "Tech Connect" sign was designed by Michael Thompson of Coded Meaning, a frequent collaborator with Ms. Wagner.

Internationally-recognized photographer Catherine Wagner was commissioned by the City of San Jose Public Art Program and the San Jose Public Library to create a 21st century dynamic architectural frieze that investigates ideas about knowledge, nature, wonder and discovery. This frieze is installed on the clerestory walls of the library entrance, and consists of printed images laminated to aluminum panels. These prints are hung "salon style" (stacked and close to one another), according to how each image relates to one another conceptually and aesthetically.

The land for Independence High School, this library and the adjacent park were given by Mildred Overfelt in 1959, whose ideas of nature, reflection, stimulation and enlightenment were the catalysts for the concept of this piece.



Detail of *Nature Knowledge*

ABOUT THE ARTIST

Catherine Wagner is a native of San Francisco, California. After studies at Instituto del Arte, San Miguel de Allende, Mexico; San Francisco Art Institute; and College of Marin, Kentfield, California; Wagner completed both a BA (1975) and an MA (1977) from San Francisco State University. She is the recipient of a John Simon Guggenheim Memorial Foundation Fellowship (1987) and two fellowships from the National Endowment for the Arts (1981, 1990/91). Solo exhibitions of *Realism and Illusion: Catherine Wagner Photographs the Disney Theme Parks* were held at the Nelson Atkins Museum, Kansas City, Missouri; Modern Art Museum of Fort Worth, Texas; and Gallery Luisotti, Santa Monica, California. Her work is in numerous collections, including those of the Los Angeles County Museum of Art; Museum of Fine Arts, Houston; Museum of Modern Art, New York; San Francisco Museum of Modern Art; and The Whitney Museum of American Art. Wagner has taught at Mills College, Oakland, California since 1979.

More about the artist may be found at www.wirtzgalleries.com/bios/bio_wagner.html

ABOUT THE PUBLIC ART PROGRAM

The City of San José Public Art Program seeks to build community identity by initiating artworks and exhibitions that enhance the civic landscape and experience. Through active community engagement, public art strives to reflect the City's diversity, historic richness, and envision its present and future.

The Public Art Program is part of the City's Cultural Affairs, a division of the Office of Economic Development. The Public Art Program was established by a 1984 municipal ordinance that provides public art through funding from City capital improvement projects and eligible private development.

For further information and photos, please contact the San José Public Art Program.

